

CITADEL MINIATURES LTD.

Science Fiction, Fantasy and Historical
Miniature Figures
for the Gamer and Collector



Catalogue

CITADEL MINIATURES LTD.

Newark Folk Museum, 48 Millgate, Newark, Nottinghamshire

TRADE ORDERS WELCOME

Tel: 0636 77495

Unless otherwise stated all ranges in this catalogue are 25mm scale. Each figure is individually price coded. The prices relating to the codes are:

PRICE CODES

A	= 20p	N	= £1.00
B	= 22p	O	= £1.10
C	= 30p	P	= £1.20
D	= 35p	Q	= £1.30
E	= 40p	R	= £1.40
F	= 45p	S	= £1.50
G	= 50p	T	= £1.75
H	= 55p	U	= £2.00
I	= 60p	V	= £2.50
J	= 70p	W	= £2.95
K	= 80p	X	= £3.95
L	= 90p	Y	= £4.95
M	= 95p	Z	= £5.95

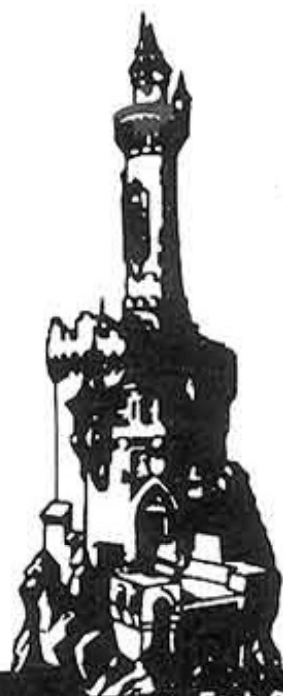
Should there be any price changes in the future, these will be announced in our advertisements. To keep your catalogue up to date, just send a S.S.A.E. to us asking for a new adhesive Price List.

Please note that the photographs in this catalogue are not all to the same scale.

MAIL ORDER CHARGES:

UK: Please add 10% p&p (min. 12p)

OVERSEAS: Please add 33% p&p.



Each Citadel Master Figure is Individually Hand Sculptured by our own Craftsmen

CHADEL

FANTASY ADVENTURERS

Price Code: B



Designer:
Michael
Perry

FA2 Wizard with Staff



FA1 FA2 FA3 FA4



FA5 FA6 FA7



FA8 FA9 FA10 FA11



FA12 FA13 FA14 FA15



FA16 FA17 FA18 FA19

A new range of intrepid heroes available for fearsome adventures.

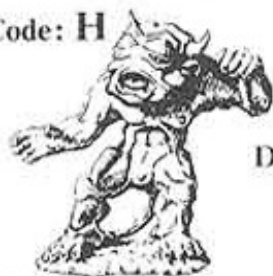
- FA1 Fighter in Plate Mail with Sword B
- FA2 Wizard with Staff B
- FA3 Cleric with Cross and Mace B
- FA4 Sneak Thief with Dagger B
- FA5 Druid with Sickle B
- FA6 Bard with Sword and Lute B
- FA7 Monk with Staff B
- FA8 Ranger with Sword and Bow .. B
- FA9 Barbarian with Two Handed Sword B
- FA10 Paladin with Sword B
- FA11 Illusionist B
- FA12 Ninja (Assassin) with Sword ... B
- FA13 Man Beast B
- FA14 Elven Hero with Sword B
- FA15 Dwarf with Two Handed Hammer B
- FA16 Female Wizard with Dagger and Staff B
- FA17 Female Thief with Dagger and Sack B
- FA18 Female Cleric with Mace B
- FA19 Female Fighter with Breastplate and Sword B
- FA20 Houri with Dagger B
- FA21 Evil Wizard B
- FA22 Evil Cleric B
- FA23 Evil Priestess B
- FA24 Anti-Hero B
- FA25 Necromancer B

MORE AVAILABLE SOON

This range is suitable for use with all Fantasy role-playing games.

FIEND FACTORY

Price Code: H



Designer:
Bryan
Ansell

FF1 The Fiend

A superb range of mythological and fictitious beasts for the discerning fantasy gamer.

FF1	The Fiend	H
FF2	Slime Beast with Sword.....	E
FF3	Hook Horror.....	H
FF4	Crabman	H
FF5	Phantom Stalker.....	F
FF6	Giant Blood Worm	N
FF7	Death Worm	D
FF8	Volt (2 pcs)	D
FF9	Carbuncle.....	F
FF10	Devil Dog.....	B
FF11	Grell	E
FF12	Assassin Bug	C
FF13	Bonesnapper	D
FF14	Cyclops.....	D
FF15	Hill Giant Swinging Club	F
FF16	Giant Troll Attacking with Spiked Club	N
FF17	Minotaur	H
FF18	Wraith	B
FF19	Werewolf.....	B
FF20	Goblins Charging with Swords and Shields (3 figs)	H
FF21	Goblins Attacking with Axes (3 figs)	H
FF22	Goblins Firing Bows (3 figs) ...	H
FF23	Goblins Advancing with Spears (3 figs)	H
FF24	Red Orcs in Chainmail with Swords (3 figs)	H
FF25	Red Orcs Attacking with Swords (3 figs)	H
FF26	Red Orcs in Plate Armour with Swords (3 figs)	H
FF27	Red Orc with Spear Mounted on Giant Tusker	N
FF28	Red Orc in Chainmail Mounted on Giant Tusker	N
FF29	Red Orc in Plate Armour Mounted on Giant Tusker	N
FF30	Zombie	B
FF31	Satanic Angel	F
FF32	Golem	B
FF33	Great Fire Dragon (4 pcs)	Y
FF34	Chimaera (3 pcs)	J
FF35	Manticore (3 pcs)	J
FF36	Medusa	B
FF37	Warrior of the Stone	B
FF38	Giant Rats (3 figs)	F
FF39	Amazon Berserker with Dagger	B
FF40	Berserker with Sword	B
FF41	Centaur Chief with Sword.....	J
FF42	Salaman Warrior Advancing with Pike.....	B



FF1

FF3

FF4



FF5

FF9

FF10

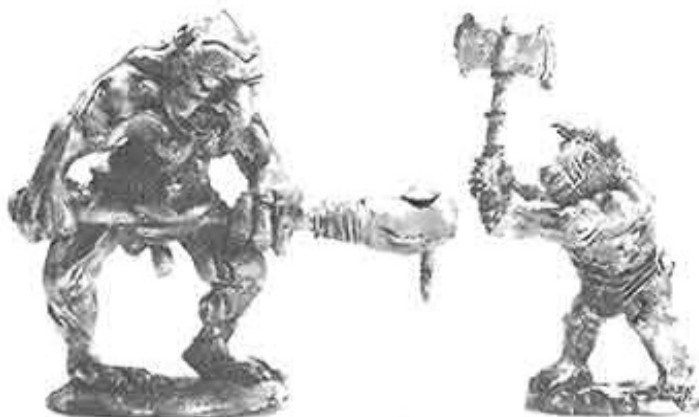


FF11

FF13

FF14

FF15



FF16

FF17



FF18

FF20

FF21

Price Code: D



Designer:
Humphrey
Leadbitter

FS27 Treasure Chest



FS1



FS5

Dungeon inmates and artifacts both for games and dioramas.

- FS1 Dungeon Doorway J
- FS2 Magic Mouth Doorway N
- FS3 Demon Floor Trap F
- FS4 Living Wall K
- FS5 Old Wizard on Throne Reading Book Lectern (3 pcs) N
- FS6 Dungeon Torturess with Whip. B
- FS7 Naked Girl Bound Hand and Foot B
- FS8 Naked Girls Bound to Post, Cross and Yoke (3 figs) N
- FS9 Naked Girl Hanging from Wooden Trestle (3 pcs) F
- FS10 Naked Girl Roasting on Spit over Brazier (4 pcs) K
- FS11 Hunchback Beggar on Crutch B
- FS12 Ornate Sarcophagus (2 pcs) F
- FS13 Trapdoor and Floor Grill (2 pcs) D
- FS14 Dungeon Debris, Equipment and Treasure (3 figs) D
- FS15 Robin Hood B
- FS16 Wandering Minstrel B
- FS17 The White Dwarf B
- FS18 Rasputin the Mad Monk B
- FS19 Soothsayer B
- FS20 Naked Girl in Stocks H
- FS21 Naked Girl in Pillory H
- FS22 Victim in Iron Cage, Hanging from Gibbet H
- FS23 Tavern, Table and Bench E
- FS24 Large Tavern Bed, Unmade H
- FS25 Tavern Accessories (Chest, Sacks, Barrel, etc. (6 pcs) E
- FS26 A Hero's Armour Hanging on Post B
- FS27 Large Treasure Chest D
- FS28 Slain Adventurers (2 figs) F
- FS29 Expedition Mule G
- FS30 Naked Girl in Restraining Device C
- FS31 Lion's Head Fountain. J
- FS32 Magic Items F
- FS33 Witch's Items F
- FS34 Treasure Items F
- FS35 Idol F
- FS36 Statue F
- FS37 Round Table D
- FS38 Chairs B
- FS39 Large Centipede B
- FS40 Large Spider B
- FS41 Large Beetles B



FS6



FS11



FS15



FS16



FS17



FS18



FS19



FS20



FS21



FS24



FS26



FS27

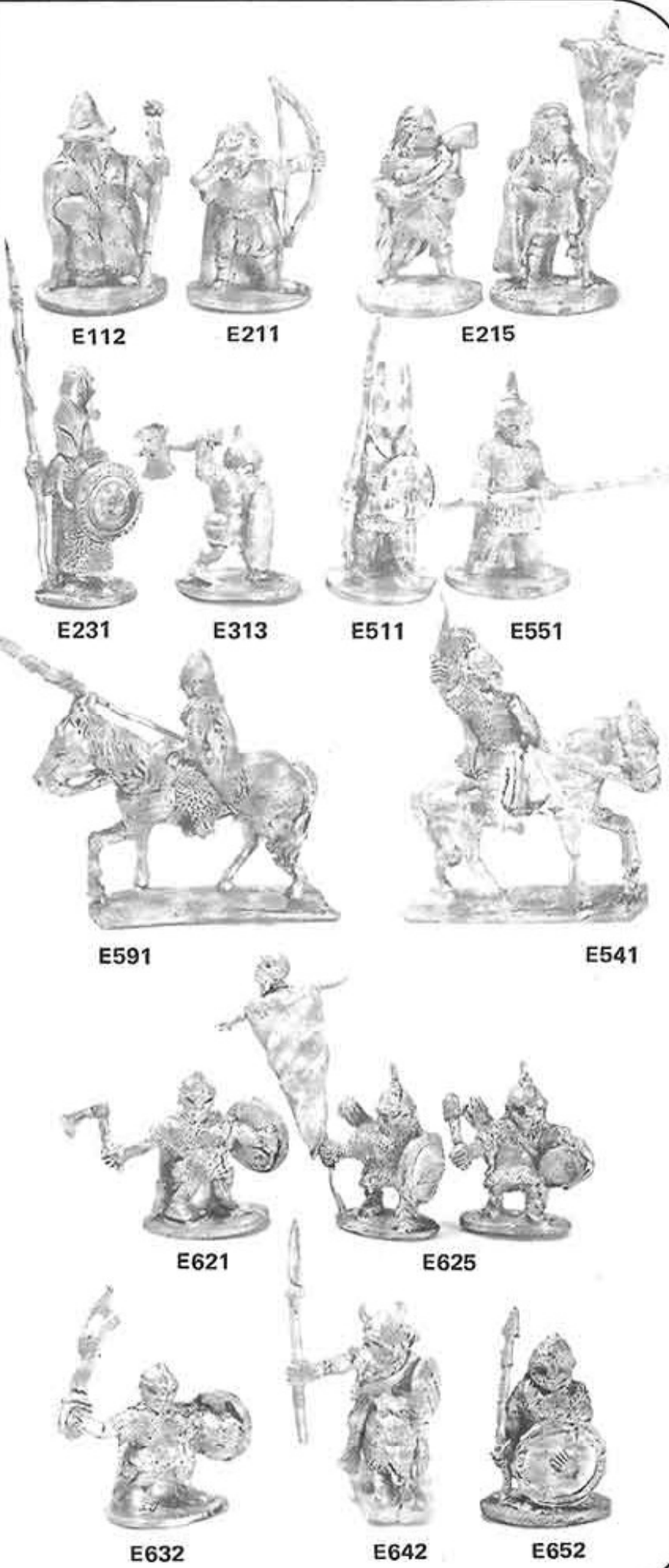
Ral Partha

WIZARDS
WARRIORS &
WARLOCKS

Designer: Ral Partha

Price Code: B

E232 Sea Elf in Chainmail
& Cloak, Attacking



A host of fantasy characters.

- E111** Halving Esquires (2 figs) F
- E112** Wizard with Staff B
- E211** Wood Elf in Cloak firing Bow. B
- E212** Wood Elf Receiving with Spear B
- E213** Wood Elf in Reserve with Spear B
- E215** Wood Elf Command Pack
(3 figs) H
- E231** Sea Elf in Chainmail and Cloak B
- E232** Sea Elf in Chainmail and Cloak
attacking B
- E311** Dwarf of the Anvil in Chainmail
Attacking with Mattock B
- E312** Dwarf of the Anvil, in Chainmail
with Mattock B
- E313** Dwarf of the Blue Mountains
Swinging an Axe B
- E314** Dwarf of the Blue Mountains
with Axe B
- E315** Dwarf Command Pack (3 figs). H
- E511** Guards of the Citadel B
- E551** Southron Heavy Spearman... B
- E611** Goblins of the North, Advancing
with Spear (3 figs) H
- E612** Goblins of the North, Swinging
Spiked Club (3 figs) H
- E613** Goblins of the North with Bow
(3 figs) H
- E621** Goblins of the Night, Advancing
with Scimitar (3 figs) H
- E622** Goblins of the Night, Advancing
with Axe (3 figs) H
- E623** Goblins of the Night with Bow
(3 figs) H
- E625** Goblins of the Night Command
Pack (3 figs) H
- E631** Goblins of the South Swinging
Axe (3 figs) H
- E632** Goblins of the South with
Hollow Scimitar (3 figs) H
- E633** Goblins of the South with
Spears (3 figs) H
- E651** Giant Goblin in Heavy Armour
with Sword B
- E652** Giant Goblin in Heavy Armour
with Spear B
- E691** Great Wolf of the Night B
- Mounted figures**
- E541** Lancer of the March, in Chain-
mail, Swinging Sword F
- E542** Lancer of the March, in Chain-
mail with Lance up F
- E591** Knight of the Dragon Lord F
- E711** Scuzbek Heavy Cavalry F
- E641** Wolf Rider of the Night, with
Axe F
- E642** Wolf Rider of the Night, with
Spear and Shield F



Price Code:
B

CS35: Dwarf Striking with Axe



CS1



CS5



CS6



CS10



CS19b



CS35



CS37



CS39b



CS39a



CS39d

Masterpieces in miniature. This range is acclaimed as the finest quality range of fantasy figures yet produced. Each is superbly and accurately detailed.

CS1	Wood Elf with Bow	B
CS5	Wood Elf Cavalry with Spear	F
CS6	Sea Elf Standing with Spear	B
CS7	Sea Elf Advancing with Spear	B
CS9	Sea Elf Striking with Axe	B
CS10	High Elf with Sword	B
CS11	High Elf Advancing with Sword	B
CS12	High Elf with Spear	B
CS14	High Elf Archer	B
CS15	High Elf Cavalry with Great Sword	F
CS16	Elfin Cavalry with Bow	F
CS19a	Elf Command Group Trumpeter	B
CS19b	Elf Command Group Standard Bearer	D
CS19c	Elf Command Group Officer	B
CS31	Dwarf Striking with Spear	B
CS34	Dwarf with Two-Handed Sword	B
CS35	Dwarf Striking with Axe	B
CS37	Dwarf Striking with Hammer	B
CS38	Dwarf Striking with Mattock	B
CS39a	Dwarf Command Group Drummer	B
CS39b	Dwarf Command Group Horn Blower	B
CS39c	Dwarf Command Group Standard Bearer	B
CS39d	Dwarf Command Group Chieftain	B
CS60	Hobgoblin with Scimitar	B
CS61	Hobgoblin with Morning Star	B
CS63	Hobgoblin Archer Loading	B
CS65	Hobgoblin with Falchion	B
CS66	Hobgoblin with Two-Handed Axe	B
CS67	Hobgoblin with Club	B
CS68	Hobgoblin with Halberd	B
CS69a	Hobgoblin Command Group Drummer	B
CS69b	Hobgoblin Command Group Horn Blower	B
CS69c	Hobgoblin Command Group Standard Bearer	C
CS69d	Hobgoblin Command Group Chieftain	B
CS90	Fantasy Wolf	C

This range is suitable for use with all Fantasy role-playing games.

Kal Partha

PERSONALITIES
AND THINGS
THAT GO 'BUMP'
IN THE NIGHT

Designer: Tom Meier

Price Code: B

ES19 Angel of Death



The award winning range of fantastic beasts and bold adventurers.

- | | | |
|------|---|---|
| ES1 | Evil Wizard Casting Spell | B |
| ES2 | Super Hero with Axe on Super Heavy Horse | H |
| ES3 | Balrog Advancing with Sword and Whip | N |
| ES4 | Cleric, Cloaked with Staff | B |
| ES5 | Winged Gremlin | D |
| ES6 | Patriarch Casting Spell | B |
| ES7 | Serpent Creeper | B |
| ES8 | Zaftig Maiden | B |
| ES9 | Barbarian Hero with Long & Short Sword | B |
| ES10 | Large Hill Troll Attacking with Club | D |
| ES11 | Vallor, Warrior of the Gods | D |
| ES12 | Vallor Captain with Shield & Standard | D |
| ES13 | Assassin with Cloak & Dagger | B |
| ES14 | Count Dracula | B |
| ES15 | Super Hero with Axe | B |
| ES16 | Beowulf with Sword and Shield | B |
| ES17 | Pegasus with Mounted Warrior (4 pcs) | K |
| ES18 | Adventuress with Short Sword | B |
| ES19 | Angel of Death | H |
| ES20 | Mummy Advancing | B |
| ES21 | Elf Princess | B |
| ES22 | Elf Lord | B |
| ES23 | Shield Maiden Attacking with Sword | B |
| ES24 | Foregum, Barechested Super Hero | B |
| ES25 | Super Hero in Plate Armour on Super Heavy Horse | J |
| ES26 | Adventuress on Horseback | F |
| ES27 | Mounted Ranger | F |
| ES28 | Gremlin War Party (3 figs) | K |
| ES29 | Sorceress Casting Spell | B |
| ES30 | Wraith | B |
| ES31 | Dwarf Lord | B |
| ES32 | Centaur Archer | D |
| ES33 | Satyr (Pan) with Spear | B |
| ES34 | Land Dragon with Mounted Captain | K |
| ES35 | Land Dragon with Mounted Lancer | K |
| ES36 | Witch | B |
| ES37 | Monk with Staff | B |
| ES38 | Sprite War Band (3 figs) | H |
| ES39 | Imp War Party (3 figs) | H |
| ES40 | Werebear Attacking | H |



ES1



ES3



ES4



ES10



ES13



ES14



ES15



ES19



ES25



ES28



STAR TREK

THE MOTION PICTURE

25mm Miniature Figures

Space - the Final Frontier. These are the voyages of the Starship Enterprise, whose five year mission can now be carried out in your own homes and clubs thanks to Citadel Miniatures.

All your favourite personalities and aliens from the new motion picture are now available

Star Trek the Motion Picture figures are manufactured under licence from Paramount Pictures Corporation.

(c) Paramount Pictures Corporation.



ST1



ST2



ST3



ST5



ST6



ST9



ST10



ST12



ST13



ST14



ST24



ST6 Uhura and Christine Chapel

Captain Kirk, Mr. Spock, the Enterprise crew and a range of new aliens from the new motion picture. Each pack contains two different figures.

ST1	Captain Kirk (2 poses).....	G
ST2	Mr. Spock (2 poses)	G
ST3	Dr. 'Bones' McCoy (2 poses)...	G
ST4	Scotty and Chekov	G
ST5	Sulu and Willard Decker	G
ST6	Uhura and Christine Chapel....	G
ST7	Ilia and Janice Rand	G
ST8	Enterprise Crew	G
ST9	Security Guards	G
ST10	Vulcans	G
ST11	Deltans.....	G
ST12	Klingons	G
ST13	Aamazzarities	G
ST14	Kazarites	G
ST15	Betalgeusians	G
ST16	Arcturians	G
ST17	Zaranites	G
ST18	K'Normians	G
ST19	Rigellians	G
ST20	Rhaandarites	G
ST21	Shamin Priests	G
ST22	Megarites	G
ST23	Saurians	G
ST24	Andorians	G

This range is suitable for use with all Science Fiction role-playing games and also table top Science Fiction rules.

STAR TREK The Motion Picture™ figures are manufactured exclusively under Licence from Paramount Pictures Corporation the Trade Mark Owners.

©1979 Paramount Pictures Corporation. All rights reserved.



Designer: Michael Perry

S1: Star Patrolman with Laser Pistol

Price Code: B

SPACEFARERS

A range of travellers, traders, privateers, pirates and police of the planets and star lanes designed specifically for the new SPACEFARER rules.

- S1 Star Patrolman with Laser Pistol B
- S2 Star Patrolman on Jet Cycle..... G
- S3 Star Marshal with Laser Rifle..... B
- S4 Star Ranger with Autolaser..... B
- S5 Bounty Hunter with Bolt Rifle... B
- S6 Planetary Citizen..... B
- S7 Female Planetary Citizen..... B
- S8 Adventurer with Machine Pistol and Power Glove..... B
- S9 Adventurer with Autolaser and Force Sword..... B
- S10 Adventurer on Jet Cycle..... G
- S11 Adventuress with Laser Pistol B
- S12 Adventuress on Jet Cycle..... G
- S13 Star Lane Pirate with Machine Pistol..... B
- S14 Star Lane Pirate with Laser Pistol B
- S15 Star Lane Pirate with Bolt Gun... B
- S16 Star Lane Pirate on Jet Cycle G
- S17 Star Lane Pirate Girl with Laser Pistol..... B
- S18 Star Lane Pirate Girl on Jet Cycle G
- S19 Street Rebel with Machine Pistol B
- S20 Street Rebel on Jet Cycle..... G
- S21 Interplanetary Scout with Bolt Gun B
- S22 Interplanetary Merchant..... B
- S23 Supreme Lord of the Dark Disciples B
- S24 Dark Disciple Advancing with Machine Pistol B
- S25 Dark Disciple Crouching with Bolt Rifle..... B
- S26 Dark Disciple with Portable Missile Launcher B
- S27 Dark Disciple in Power Armour with Heavy Bolt Rifle..... B
- S28 Dark Disciple Follower on Jump Scooter G
- S29 Dark Disciple Monk with Bolt Gun..... B
- S30 Fanatic Disciple with Bolt Gun and Power Glove B
- S31 Fanatic Disciple Priest with Bolt Gun and Hand Flamer..... B
- S32 Emperor of the Imperialists..... B
- S33 Imperial Marine Advancing with Laser Rifle B
- S34 Imperial Marine Advancing with Needle Rifle B
- S35 Imperial Marine with Conversion



S1



S2



S3



S4



S5



S6



S7



S8



S9



S11



S13



S14



S15



S17



S18



S19

Ral Partha

**GALACTIC
GRENADIERS**

Designer: Tom Meier

Price Code: **B**

**GG23 Mercenary with Grenade
Launcher Advancing**



A Science Fiction range of infantry and aliens designed especially for use with **STRIKE TEAM ALPHA** and other Science Fiction games.

GG1	Infantry Advancing with Megawatt Laser	B
GG3	Infantry Prone with Semi-Portable Laser	B
GG5	Infantry with Automatic Grenade Launcher	B
GG7	Infantry with Automatic Missile Launcher	B
GG10	Power Armour Infantry with Sun Gun	B
GG11	Power Armour Infantry with Sun Gun Advancing Prone.....	B
GG15	Crewman with Laser Pistol, Standing	B
GG20	Mercenary with Assault Rifle, Standing	B
GG23	Mercenary with Grenade Launcher Advancing.....	B
GG30	Shoantra with Needle Gun, Standing	B
GG40	T'Rana (Reptilian) Advancing	B



GG1



GG3



GG5



GG7



GG11



GG10



GG15



GG20



GG23



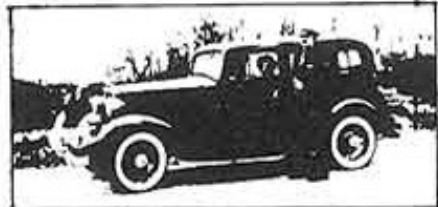
GG30



GG40

This range is suitable for use with all Science Fiction role-playing games and also table top Science Fiction rules.

GANGSTER!



G1 Al Capone

Price Code: H



G1



2 of G2

2 of G3



3 of G5



2 of G6



1 of G8

2 of G11

A range of mobsters, molls and lawmen designed especially for use with **GANGSTER!** – the role-playing game of crime and crime prevention published by *Fantasy Games Unlimited Inc, New York, USA.*

- G1 Al Capone at Desk H
- G2 Bonnie & Clyde with C.W. Moss.. H
- G3 John Dillinger and Girlfriends H
- G4 Machine Gun Kelly, Baby Face Nelson & Legs Diamond H
- G5 Elliot Ness with Federal Agents .. H
- G6 G-men (3 figs) H
- G7 State Troopers (3 figs) H
- G8 Police Action Pack (3 figs) H
- G9 Uptown Dudes (3 figs) H
- G10 Henchmen (3 figs) H
- G11 Street Punks (3 figs) H
- G12 Racketeers (3 figs)..... H
- G30 Weapons Pack D

Ral Partha

1200 A.D.

Designer: Tom Meier

Price Code: H

AD1122 English Foot-Knights



AD1101



AD1107



AD1111



AD1121

Medievals and Vikings.

- AD1101 Vikings, Swinging Axes (3 figs) H
- AD1106 Viking Archers (3 figs) H
- AD1107 Vikings, Swinging Swords (3 figs) H
- AD1108 Vikings, Striking with Axes (3 figs) H
- AD1111 Vikings, Striking with Two-handed Swords (3 figs) H
- AD1121 English Longbowmen (3 figs) .. H
- AD1122 English Foot-Knights (3 figs) .. H
- AD1123 English Men-at-Arms (3 figs) .. H
- AD1125 English Knight, Mounted with Horsecloth F
- AD1142 German Foot-Knights with Morning Stars (3 figs)..... H
- AD1152 French Men-at-Arms with Swords (3 figs) H
- AD1153 French Men-at-Arms with Spears (3 figs) H
- AD1155 French Knight, Mounted with Horsecloth F
- AD1160 Spanish Armoured Infantry, with Swords (3 figs) H
- AD1161 Spanish Armoured Infantry, with Bastard Sword (3 figs) ... H
- AD1165 Catalan Archers (3 figs) H
- AD1166 Spanish Cavalry, with Lance .. F
- AD1168 Spanish Cavalry, with Sword .. F
- AD1171 Moorish Archers (3 figs) H
- AD1172 Moors Advancing with Spears and Shields (3 figs) H
- AD1173 Moorish Archers, Kneeling, Firing (3 figs) H
- AD1175 Moorish Cavalry, with Scimitar F
- AD1176 Moorish Cavalry, with Spear .. F
- AD1177 Moorish Horse Archer F
- AD1181 Byzantine Infantrymen, with Spears (3 figs) H
- AD1182 Varangian Guards, with Two-Handed Axes (3 figs)..... H
- AD1200 Mongol Horse Archer..... F
- AD1201 Mongol Medium Cavalry with Spear - A F
- AD1202 Mongol Medium Cavalry with Spear - B F
- AD1203 Mongol Medium Cavalry with Spear - C F
- AD1204 Mongol Cavalry with Mace F
- AD1205 Mongol Heavy Cavalry F
- AD1206 Mongol Horse Archer F
- AD1209 Mongol Auxiliary Archer (3 figs) H
- AD1216 Sung Chinese Heavy Infantry with Sword (3 figs) H



AD1122



AD1123



AD1142



AD1152



AD1172



AD1181



AD1182



AD1125



AD1155



AD1166



AD1202



AD1204

DARK AGES



Designer:
Michael
Perry

Price
Code:
H

DA20: Archers



DA7



DA9



DA12



DA13



DA16



DA19



DA20



DA21



DA25



DA27



DA29

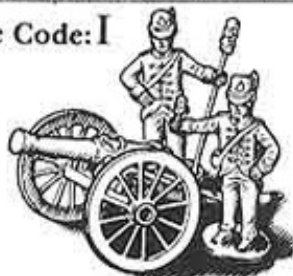
A superb range of Dark Age figures with innovative individualised figures. The Arabs and Turkish cavalry have been specially prepared by a new method to have different faces, helmets and shields to provide individualised figures of the same kind. This gives 20+ different Arab spearmen for example. Thus each pack of a figure is likely to be different providing you with forces with an authentic individuality.

DA1	Arab Cavalry Spearman.....	F
DA2	Arab Cavalry Swordsman.....	F
DA3	Arab Heavy Cavalry.....	F
DA4	Arab Extra Heavy Cavalry.....	F
DA5	Arab Horse Archer.....	F
DA6	Arab Spearmen (3 figs).....	H
DA7	Arab Javelinmen (3 figs).....	H
DA8	Arab Slingers (3 figs).....	H
DA9	Arab Camel Archer.....	H
DA10	Arab 'Ghazi' Fanatic Infantry (3 figs).....	H
DA11	Pack Camel.....	H
DA12	Byzantine Heavy Cavalry.....	H
DA13	Byzantine Heavy Cavalry Bowman.....	F
DA14	Byzantine Extra Heavy Cavalry.....	F
DA15	Byzantine Extra Heavy Cavalry Bowman.....	F
DA16	Byzantine Cataphract.....	F
DA17	Trapezitae Light Cavalry.....	F
DA18	Byzantine Heavy Infantry (3 figs).....	H
DA19	Byzantine Front Rank Heavy Infantry (3 figs).....	H
DA20	Archers (3 figs).....	H
DA21	Crossbowmen (3 figs).....	H
DA22	Javelinmen (3 figs).....	H
DA23	Staff Slingers (3 figs).....	H
DA24	Norman Heavy Cavalry.....	F
DA25	Turkish Cavalry.....	F
DA26	Petchneg Light Cavalry.....	F
DA27	Russ Heavy Infantry (3 figs)...	H
DA28	Slav Infantry (3 figs).....	H
DA29	Varangian Guardsman in Full Armour (3 figs).....	H
DA30	Arab Archer (3 figs).....	H
DA31	Byzantine Heavy Infantry Archer (3 figs).....	H

This range is suitable for use with all table top rules covering this period, for example, WRG Ancients (3000B.C. - 1250A.D.) as well as role-playing games set in this era, such as Heroes. The figures are also ideal for Fantasy role-playing games. - MORE AVAILABLE SOON

**RAL PARTHA:
15mm NAPOLEONICS**

Price Code: I



N210 AUSTRIA
Foot Artillery Crew, in
Overcoat

A range of 15mm Napoleonics for the discerning wargamer.

FRANCE

- N102 Old Guard Attacking (10 figs). |
- N111 Horse Artillery Crew (10 figs). |
- N123 Line Fusilier/Voltigeur
Advancing (10 figs) |
- N128 Line Fusilier/Voltigeur on
Guard (10 figs) |
- N161 Cuirassier Charging (5 figs)..... |
- N163 Carabinier a-Cheval (1812)
Slashing (5 figs) |
- N171 Hussar Charging (5 figs)..... |
- N180 Old Guard Command |
- N187 General and Aides on
Horseback (5 figs) |

ENGLAND

- N310 Foot Artillery Crew (10 figs).. |
- N320 Line Infantry (1812-15)
Advancing (10 figs) |
- N323 Line Infantry (1812-15)
Firing (10 figs) |
- N341 Line Infantry 1808/Light
Infantry, Advancing (10 figs) . |
- N343 Rifle Regiment Firing (10 figs) |
- N351 Highlander Advancing (10 figs) |
- N366 Scots Grey Advancing (5 figs) |
- N371 Hussar in Busby Charging
(5 figs) |
- N373 Light Dragoon in Shako
Charging (5 figs) |
- N380 Infantry Command..... |

ARTILLERY—ENGLAND

- N901 6lb Gun (3 figs) |
- N902 9lb Gun (3 figs) |
- N904 8" Howitzer (3 figs) |

MANY MORE AVAILABLE SOON



N102

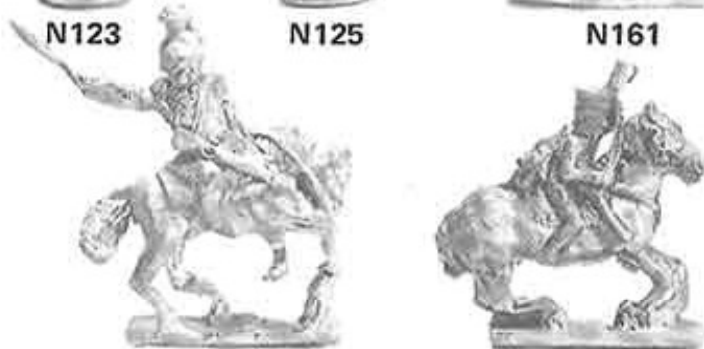
N111



N123

N125

N161



N163

N171



N310

N320



N323

N341

N343



N380

This range is suitable for use with all 15mm Napoleonics rules.

54mm

from
**CITADEL
MINIATURES**
Newark Nottinghamshire



DA5402



DA5404

DARK AGES

A range of personality figures designed by Michael and Alan Perry. Each figure is superbly sculpted with the accent on giving each piece plenty of traditional character.

- DA5401 Rus Warrior U
 - DA5402 Varangian Guardsman
Sharpening Axe U
 - DA5403 Carolingian Officer U
 - DA5404 Mounted Avar Y
- 5403 and 5404 are designed to be used together in dioramas.

MORE AVAILABLE SOON

SCIENCE FICTION ADVENTURERS

A range of science fiction personalities from Ackland Miniatures, designed by Tony Ackland.

- SP1 Star Pirate Captain with Power
Claw and Spectral Eye V
- SP2 Star Pirate with Micro-phase
Pistol V
- SP3 Star Pirate Adventuress with
Electromag Bren V



SP1 SP2 SP3

THE MOTION PICTURE
54mm



54mm STAR TREK

A fine-sculpted range of personality figures for dioramas and collectors.

- ST5401 Captain Kirk Seated at Helm . W
- ST5402 Mr. Spock U
- ST5403 Ilia, in Deltan Leisure Dress. . U
- ST5404 Klingon Raider w. Laser Pistol. U

STAR TREK The Motion Picture™ figures are manufactured exclusively under Licence from Paramount Pictures Corporation the Trade Mark Owners.

©1979 Paramount Pictures Corporation. All rights reserved.



ST5401



ST5402



ST5403

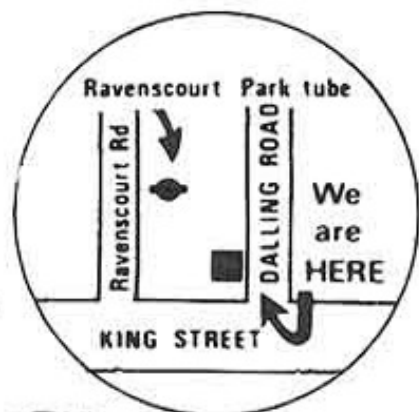


ST5404

Please note that the above photographs are of our designers' pre-production masters. The designers of these superb personality figures are Michael and Alan Perry.

Games Workshop

Specialists in Science Fiction, Fantasy & War Games



and the leading stockist of Citadel Miniatures.

We have the entire Citadel range on display in our London shop, along with our vast range of games.

CATALOGUE

For our 52 page illustrated games catalogue describing over 300 games with over 130 illustrations plus introductory literature just send a large stamped (16½p) addressed envelope plus 30p in stamps.

MAIL ORDER

All our games are available through our fast and efficient mail order service.

**Games
Workshop**

1 DALLING ROAD
HAMMERSMITH,
LONDON W6

Ravenscourt Park tube
Open: Mondays-Fridays, 10.30-6.00:
Saturdays, 10.00-5.30

Tel: 01-741 3445

